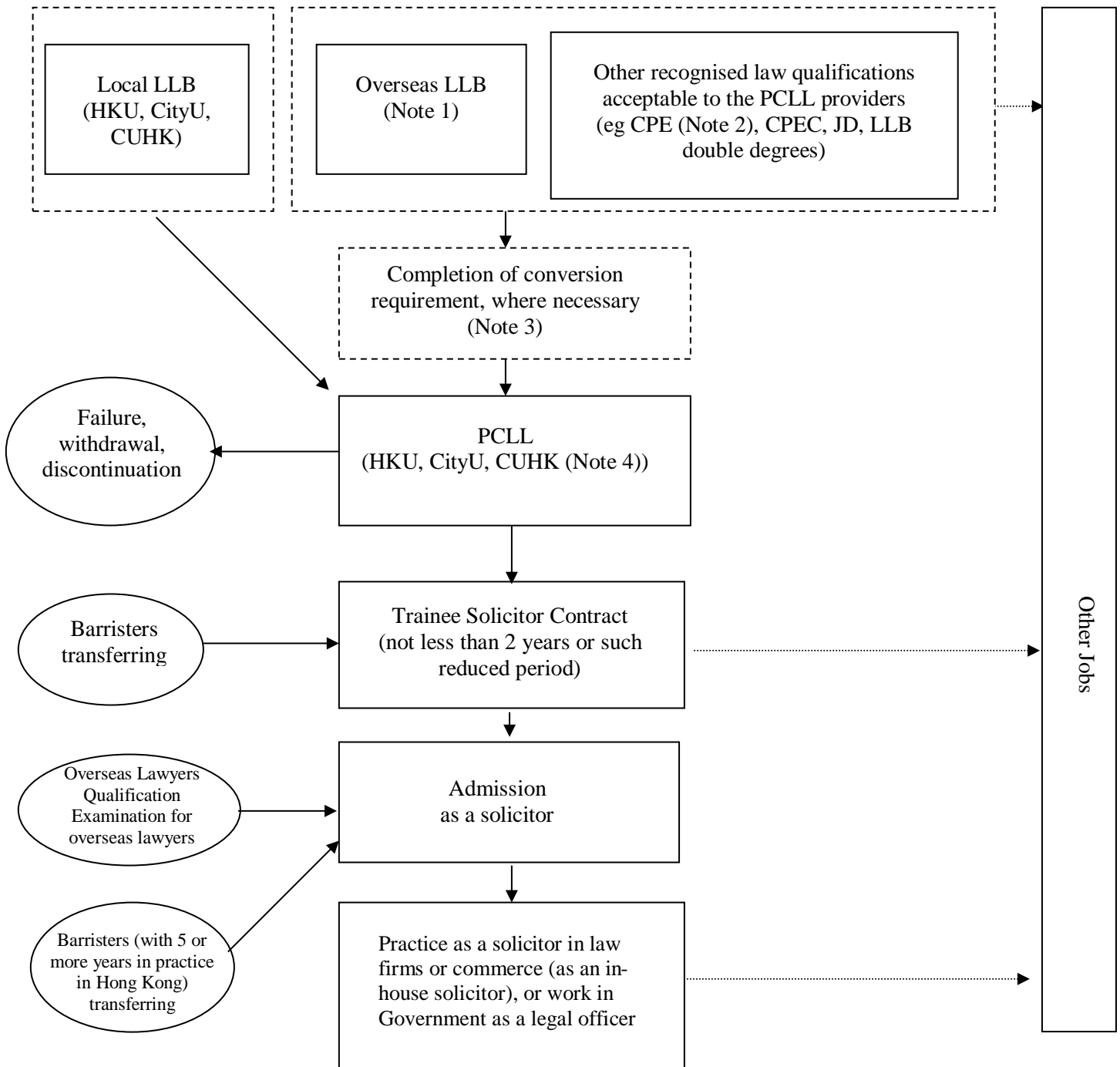


“TRAINEE SOLICITOR” ROUTE



Note:

1. Preparatory tuition on LLB courses of some overseas universities available locally
2. Preparatory tuition on CPE (Award of Manchester Metropolitan University) available locally
3. To be eligible for admission to the PCLL, students have to demonstrate competence in 9 core subjects (Contract, Tort, Constitutional Law, Criminal Law, Land Law, Equity, Evidence, Business Associations and Commercial Law) and 3 top up subjects (Hong Kong Constitutional Law, Hong Kong Legal System and Hong Kong Land Law if these subjects were not passed at a university LLB / LLB double degrees / JD course / Advanced Diploma for Legal Executives (Graduate Level) (HKU SPACE) in Hong Kong)
4. With effect from 2008/09

Key:

HKU – The University of Hong Kong
 CityU – The City University of Hong Kong
 CUHK – The Chinese University of Hong Kong
 LLB – Bachelor of Laws
 PCLL – Postgraduate Certificate in Laws
 CPE – Common Professional Examination of England and Wales
 CPEC – Common Professional Examination Certificate in Laws
 JD – Doctor of Jurisprudence